

2018 All Grades for
Discovery Academy

IRN: 014188
School Type: Elementary School
Address: 2740 W Central Ave
Toledo, OH 43606-3452

District: Discovery Academy
County: Lucas
ITC: NWOCA



Achievement

The Achievement component represents the number of students who passed the state tests and how well they performed on them.

Performance Index
59.6%..... D
Indicators Met
0.0%..... F

[VIEW MORE DATA](#)

[VIEW GIFTED DATA](#)

COMPONENT GRADE

D

COMPONENT POINTS

1.125



Progress

The Progress component looks closely at the growth that all students are making based on their past performances.

Value-Added
Overall..... F
Gifted..... NR
Lowest 20% in Achievement..... C
Students with Disabilities..... F

[VIEW MORE DATA](#)

COMPONENT GRADE

D

COMPONENT POINTS

1.368



Gap Closing

The Gap Closing component shows how well schools are meeting the performance expectations for our most vulnerable populations of students in English language arts, math and graduation.

Annual Measurable Objectives
57.4%..... F

[VIEW MORE DATA](#)

COMPONENT GRADE

F

COMPONENT POINTS

1.000



Graduation Rate

The Graduation Rate component looks at the percent of students who are successfully finishing high school with a diploma in four or five years.

Graduation Rates
0.0% of students graduated in 4 years..... NR
0.0% of students graduated in 5 years..... NR

[VIEW MORE DATA](#)

COMPONENT GRADE

NR

COMPONENT POINTS

0.000



Improving At-Risk K-3 Readers

The K-3 Literacy component looks at how successful the school is at getting struggling readers on track to proficiency in third grade and beyond.

K-3 Literacy Improvement
37.8%..... C

[VIEW MORE DATA](#)

COMPONENT GRADE

C

COMPONENT POINTS

2.250



Prepared for Success

Whether training in a technical field or preparing for work or college, the Prepared for Success component looks at how well prepared Ohio's students are for all future opportunities.

[VIEW DATA](#)

COMPONENT GRADE

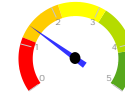
NR

COMPONENT POINTS

0.000

Component	Component Points	Component Weight	Weighted Points
Achievement Points:	1.125	x 27.50%	= 0.309
Progress Points:	1.368	x 27.50%	= 0.376
Gap Closing Points:	1.000	x 22.50%	= 0.225
Graduation Rate Points:	0.000	x 0.00%	= 0.000
K-3 Literacy Points:	2.250	x 22.50%	= 0.506
Prepared for Success Points:	0.000	x 0.00%	= 0.376

Overall
Points: 1.417



FINAL GRADE

D

A = 4.125 - 5.000
B = 3.125 - 4.124
C = 2.125 - 3.124
D = 1.125 - 2.124
F = 0.000 - 1.124

[Click here](#) to see the Secure Data Center - Status of Reports report