

2019 All Grades for  
Discovery Academy

IRN: 014188  
School Type: Elementary School  
Address: 2740 W Central Ave  
Toledo, OH 43606-3452

District: Discovery Academy  
County: Lucas  
ITC: NWOCA



**Achievement**

The Achievement component represents the number of students who passed the state tests and how well they performed on them.

Performance Index  
60.0%..... D  
Indicators Met  
0.0%..... F

[VIEW MORE DATA](#)

[VIEW GIFTED DATA](#)

COMPONENT GRADE

D

COMPONENT POINTS

1.313



**Progress**

The Progress component looks closely at the growth that all students are making based on their past performances.

Value-Added  
Overall..... C  
Gifted..... NR  
Lowest 20% in Achievement..... A  
Students with Disabilities..... C

[VIEW MORE DATA](#)

COMPONENT GRADE

B

COMPONENT POINTS

3.368



**Gap Closing**

The Gap Closing component shows how well schools are meeting the performance expectations for our most vulnerable populations of students in English language arts, math and graduation.

Annual Measurable Objectives  
80.0%..... B

[VIEW MORE DATA](#)

COMPONENT GRADE

B

COMPONENT POINTS

3.250



**Graduation Rate**

The Graduation Rate component looks at the percent of students who are successfully finishing high school with a diploma in four or five years.

Graduation Rates  
0.0% of students graduated in 4 years..... NR  
0.0% of students graduated in 5 years..... NR

[VIEW MORE DATA](#)

COMPONENT GRADE

NR

COMPONENT POINTS

0.000



**Improving At-Risk K-3 Readers**

The K-3 Literacy component looks at how successful the school is at getting struggling readers on track to proficiency in third grade and beyond.

K-3 Literacy Improvement  
39.2%..... C

[VIEW MORE DATA](#)

COMPONENT GRADE

C

COMPONENT POINTS

2.250



**Prepared for Success**

Whether training in a technical field or preparing for work or college, the Prepared for Success component looks at how well prepared Ohio's students are for all future opportunities.

[VIEW DATA](#)

COMPONENT GRADE

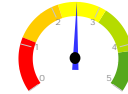
NR

COMPONENT POINTS

0.000

Component	Component Points	Component Weight	Weighted Points
Achievement Points:	1.313	x 27.50%	= 0.360937
Progress Points:	3.368	x 27.50%	= 0.926062
Gap Closing Points:	3.250	x 22.50%	= 0.731250
Graduation Rate Points:	0.000	x 0.00%	= 0.000000
K-3 Literacy Points:	2.250	x 22.50%	= 0.506250
Prepared for Success Points:	0.000	x 0.00%	= 0.000000

Overall  
Points: 2.525



FINAL GRADE

C

A = 4.125 - 5.000  
B = 3.125 - 4.124  
C = 2.125 - 3.124  
D = 1.125 - 2.124  
F = 0.000 - 1.124

[Click here](#) to see the Secure Data Center - Status of Reports report